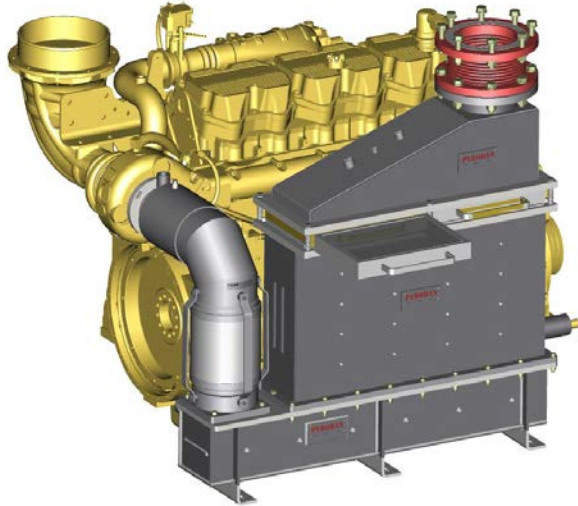


DESCRIPTION

The Pyroban Protection System Caterpillar C15 Standard Kit, when fitted to the appropriate engine, is suitable for use in hazardous areas where explosive gases occur (ATEX directive 94/9/EC).

When properly installed, the kit provides protection to:

- Equipment Group: II
- Category: 3G
- Gas Group: IIA
- Temperature Class: T3



THIS EQUIPMENT MUST BE INSTALLED AND MAINTAINED IN ACCORDANCE WITH THE PYROBAN OFFSHORE INSTALLATION MANUAL. FAILURE TO OBSERVE ANY INSTRUCTIONS IN THIS DATA SHEET MAY INVALIDATE ANY WARRANTY AGREEMENT

TECHNICAL DATA

The Pyroban Protection System Caterpillar C15 Standard Kit comprises exhaust protection and is compatible with the following engine types:

Engine Make	Caterpillar
Engine Model	C15
Engine Performance	536 bhp @ 2000 rpm
Engine Feature Codes	C15DW09, C15DW11, C15DW13, C15DW14, C15DW16, C15DW18, C15DW19, C15DW21, C15DW23, C15DW24, C15DW26, C15DW30

Pyroban Protection System Caterpillar C15 Standard Kit technical details:

Heat Rejection to Coolant	210 kW
Coolant Volume of Pyroban Parts	56 ltrs
Exhaust System Pressure Drop	5.3 kPa
Maximum Ambient Operating Temperature	50°C
Spark Arrestor Noise Attenuation	18 dB(A)
Approximate Mass of Pyroban System (Dry)	750 kg
Approximate Mass of Pyroban System (Wet)	808 kg

Details of Variations:

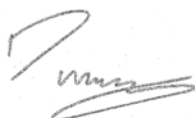
MECCATC15:536:20:SM:STD	Standard kit without spark arrester
MECCATC15:536:20:SM:STD:1	Standard kit with spark arrester having inline inlet and exit.
MECCATC15:536:20:SM:STD:2	Standard kit with spark arrester having right-hand side inlet (when viewed from inlet end) and inline exit.
MECCATC15:536:20:SM:STD:3	Standard kit with spark arrester having left-hand side inlet (when viewed from inlet end) and inline exit.
MECCATC15:536:20:SM:STD:4	Standard kit with spark arrester having lower side inlet (when viewed from inlet end) and inline exit.

ORDERING SPARE PARTS

Use only genuine Pyroban parts. Order spares or replacement parts directly from Pyroban quoting the Pyroban Part Number. Note that fitting of incorrect parts may invalidate certification.

DECLARATION OF CONFORMITY

We, Pyroban Limited, Dolphin Road, Shoreham-by Sea, Sussex, BN43 6QG, UK, declare that the component mentioned in this data sheet has been designed and manufactured in accordance with the essential health and safety requirements of Directive 94/9/EC (ATEX) inclusive of subsequent amendments.



David Waring CEng MIMechE
Engineering Manager

OTHER INFORMATION

Nothing contained in this brochure is intended to extend any warranty or representation, expressed or implied, regarding the products described herein. Any such warranties or other terms and conditions of sale of products shall be in accordance with Pyroban's standard terms and conditions of sale for such products, which are available upon request. Specifications and machinery may be altered without notice at any time.

CONTACTS

Pyroban Limited Dolphin Road Shoreham-by-Sea W. Sussex BN43 6QG United Kingdom	Pyroban Benelux BV Grotenoord 24-26 - 3341 LT P.O. Box 229-3340 AE AEHendrik Ido Ambacht Nederland	Pyroban Suzhou Workshop B2 North Lou Zhong Lu Suzhou Industrial Park 215122 Suzhou Jiangsu Province P.R.China
Telephone: +44 (0) 1273 456800 Email: info@pyroban.com	Telephone: +31 (0) 78 6819377 Fax: +31 (0) 78 6818213 Email: info@pyroban.com	Telephone: +86(0) 512.62752808 Email: info@pyroban.com

www.pyroban.com